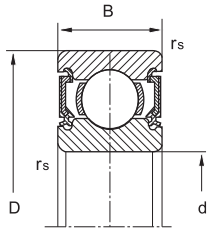
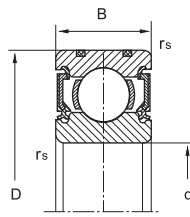


Deep groove ball bearings



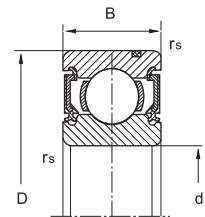
Type A

with triple-lip light contact seal



Type B

with triple-lip light contact seal and 2 nylon tolerance rings



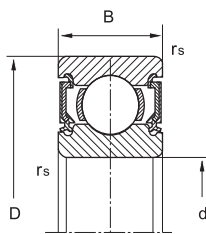
Type C

with triple-lip light contact seal and retaining rings

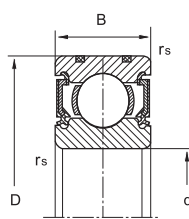
KML No.	Boundary dimensions mm				Basic load ratings N		Limiting speed	Mass	type
	d	D	B	rs min	Dynamic Cr	Static Cor	RPM	kg	
608-2RDA	8	22	7	0.3	3350	1400	32000	0.015	A
B874-2RDA	8	22	11	0.3	3300	1370	34000	0.026	C
B800-2RDA	8	23	24	0.3	3300	1370	34000	0.026	B
B879-2RDA	8	23	11	0.3	3300	1370	34000	0.026	C
B885-2RDA	8	23	14	0.3	3300	1370	34000	0.026	C
629-2RDA	9	26	8	0.3	4550	1960	30000	0.023	A
B1046-2RDA	10	23	11	0.3	2700	1270	32000	0.020	C
62000-2RDA	10	26	10	0.3	4550	1960	26000	0.024	A
6000-2RDA	10	26	8	0.3	4550	1960	29000	0.019	A
B1050-2RDA	10	27	11	0.3	4570	1970	30000	0.027	C
B900-2RDA	10	27	14	0.3	4570	1970	30000	0.030	B
6200-2RDA	10	30	9	0.6	5100	2390	25000	0.035	A
6001-2RDA	12	28	8	0.3	5100	2390	26000	0.024	A
6201-2RDA	12	32	10	0.6	6100	2750	22000	0.040	A
62201-2RDA	12	32	14	0.6	6100	2750	22000	0.049	A
B2012-2RDA	12	32	10	0.6	6820	3060	22000	0.037	C
B2011-2RDA	12	35	18	0.6	6100	2770	22000	0.071	A
6301-2RDA	12	37	12	1.0	9700	4200	20000	0.064	A
R8-2RDA*	12.7	28.58	7.938	0.4	4040	1750	19000	0.018	A
6002-2RDA	15	32	9	0.3	5600	2840	22000	0.030	A
6202-2RDA	15	35	11	0.6	7750	3600	19000	0.048	A
B2021-2RDA	15	35	13	0.6	7750	3600	19000	0.047	A
B2022-2RDA	15	38	19	0.6	7750	3600	19000	0.082	A
6302-2RDA	15	42	13	1.0	11400	5450	17000	0.085	A

Remark: " * " inch size: 1/2"x1-1/8"x5/16

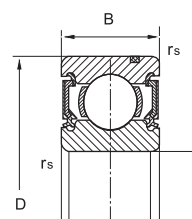
Deep groove ball bearings



Type A
with triple-lip light contact seal



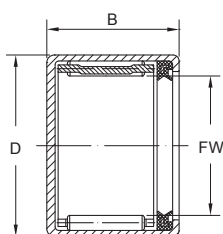
Type B
with triple-lip light contact seal and 2 nylon tolerance rings



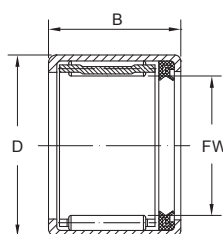
Type C
with triple-lip light contact seal and retaining rings

KML No.	Boundary dimensions mm				Basic load ratings N		Limiting speed	Mass	Type
	d	D	B	rs min	Dynamic Cr	Static Cor	RPM	kg	
B3021-2RDA	15	43	13	1.0	11400	5450	17000	0.084	A
B3022-2RDA	15	46	14	1.0	13500	6550	16000	0.103	A
B1583-2RDA	15	47	18	0.3	13460	6485	17000	0.142	A
B3031-2RDA	15	47	14	1.0	13500	6550	16000	0.111	A
B3041-2RDA	15	52	16	1.1	16000	7938	14000	0.154	A
6903-2RDA	17	30	7	0.3	4650	2580	22000	0.021	A
6003-2RDA	17	35	10	0.3	6800	3350	20000	0.042	A
6203-2RDA	17	40	12	0.6	9600	4600	18000	0.072	A
6303-2RDA	17	47	14	1.0	13500	6550	16000	0.120	A
B1594-2RDA	17	47	18	0.3	13460	6485	17000	0.135	A
B3032-2RDA	17	47	24	1.0	13500	6550	16000	0.197	A
B3042-2RDA	17	52	16	1.1	16000	7900	14000	0.163	A
B3043-2RDA	17	52	17	1.1	16000	7900	14000	0.165	A
B3044-2RDA	17	52	18	1.1	16000	7900	14000	0.173	A
6904-2RDA	20	37	9	0.3	6400	3700	19000	0.041	A
6004-2RDA	20	42	12	0.6	9400	5050	18000	0.072	A
6204-2RDA	20	47	14	1.0	12800	6650	16000	0.110	A
6304-2RDA	20	52	15	1.1	15900	7900	14000	0.150	A
6905-2RDA	25	42	9	0.3	7050	4550	16000	0.046	A
6005-2RDA	25	47	12	0.6	10400	5850	15000	0.085	A
6205-2RDA	25	52	15	1.0	14000	7850	13000	0.132	A
6305-2RDA	25	62	17	1.1	21200	10900	12000	0.240	A
63305-2RDA	25	62	25.4	1.1	21200	10900	8100	0.384	A
6906-2RDA	30	47	9	0.3	7250	5000	14000	0.050	A
6006-2RDA	30	55	13	1.0	13200	8300	13000	0.120	A
6206-2RDA	30	62	16	1.0	19500	11300	11000	0.208	A
6306-2RDA	30	72	19	1.1	26700	15000	10000	0.390	A
63306-2RDA	30	72	30.2	1.1	26700	15000	6600	0.553	A
6209-2RDA	45	85	19	1.1	32500	20400	7800	0.440	A

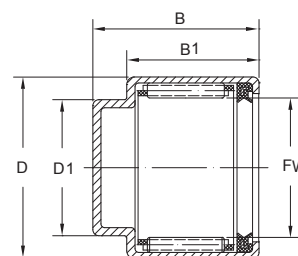
Needle Roller Bearings



Type A



Type B



Type C

KML No.	Boundary dimensions mm					Type
	Fw	D	D1	B	B1	
MNJ-471S(BA607)	17.02	23.8	-	17.02	-	A
BCH 06604A	17.05	23.813	-	17.53	-	A
TAM 1722	17	24	-	22	-	A
TAM 3022	30.2	40	-	22	-	B
SCH 1413P	22.225	30.162	-	20.64	-	B
N-102(BA608)	17.02	23.83	19	20.5	17	C
FC 66217B	17.02	23.83	18.85	31.5	24	C