



# Durapro™ Series KML stainless steel bearing housing with cap

A Remix for higher load capacity  
and better protection



The special designed KML Durapro Series capping bearing housings are available in Antimicrobial Stainless Steel depending on the specifications of the application. These mounted bearing units are suitable for use in various applications where they are exposed to moisture, sterilization processes, corrosive elements, organic chemicals and oxidizing agents.

## Applications

- Food processing plants
- Food packaging plants
- Beverage, Brewing and Bottling plants
- Meat, Poultry, Seafood processing plants
- Dairy Industry plants
- Sugar processing plants
- Pharmaceutical plants
- Chemical processing plants
- Rubber and Plastics plants
- Pulp and Paper Mills
- Marine and Naval applications
- Car Wash
- Refrigeration and freezer plants
- Agricultural Harvesting plants and machinery
- Municipal (Sand and Salt Spreaders)
- A Wide range of Material Handling Machinery and Conveyors

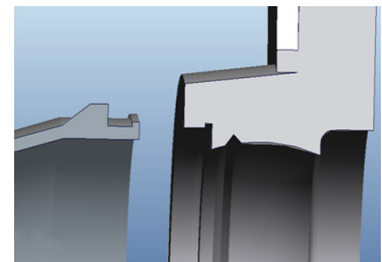
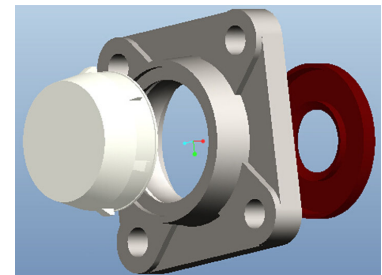
### KML Durapro Stainless Steel Housing & Poly-Guard Sealing System

KML Durapro Housing is the first Stainless Steel housing in the world to lock the open or closed type face cap. In pairing with KML Poly-Guard Multiple Stage Sealing, the new generation system delivers the increased load capacity as well as superior protection of the critical bearing area for increased service life time, which can be an ideal solution for applications exposed in complicated operation conditions.

KML Durapro system consists of the following options:

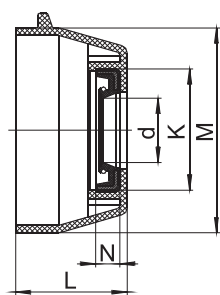
- KML special designed AISI304S stainless steel Durapro housing machined to accept the face cap and KML Poly-Guard stage sealing system.
- Closed thermoplastic face cap for complete front face enclosure for applications with non-protruding shafts.
- Spring-loaded open face cap for applications where the shaft extends past the insert bearing.
- Spring-loaded rear face seal for complete enclosure of back face mounting area.

The KML Durapro housing is a new addition to KML Corrosion resistant family. It provides significant improvements on the load capacity and retains the functionality of face cap and seals to virtually eliminate cavities where debris can accumulate.



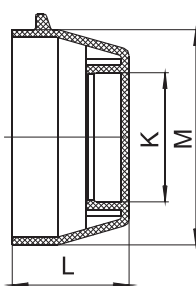
Unit number	Type			
	PO	PC	POS	PCS
	PBT Open Cover	PBT Closed Cover	PBT Open Cover+SeaL	PBT Closed Cover+SeaL
SSCUP200 Series	✓	✓		
SSUCPA200 Series	✓	✓		
SSUCFL200 Series			✓	✓
SSUCF200 Series			✓	✓
SSUCFB200 Series			✓	✓
SSUCT200 Series	✓	✓		

## ACCESSORIES - Covers



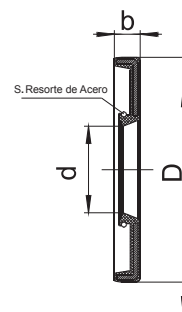
OPEN

Open Cover with Stainless Steel  
Spring-Loaded Oil Seal  
Material: (Plastic)



CLOSED

Material: (Plastic)



BACK

Back Oil Seals for 2-bolt and 4-Bolt  
Flange housings  
Material: (Plastic)

Size	Dimensions ( mm )					
	K	N	L	M	d	
OC 204	32	7	23	50	20	
OC 205	37	7	25	55	25	
OC 206	42	7	30	64	30	
OC 207	47	7	32	74.5	35	
OC 208	52	7	37	84	40	

Size	Dimensions ( mm )			
	K	L	M	
CC 204	32	23	50	
CC 205	37	25	55	
CC 206	42	30	64	
CC 207	47	32	74.5	
CC 208	52	37	84	

Size	Dimensions ( mm )		
	d	b	D
BS 204	20	6	52
BS 205	25	6	62
BS 206	30	6	72
BS 207	35	6	82
BS 208	40	6	88

### KML Stainless Steel Mounted Units

KML Stainless Steel Housings with all Stainless Steel Insert Bearings are designed for applications requiring superior resistance to corrosion and available in both inch and metric bore sizes.

#### Housing Styles

Pillow Block Housing, Flanges and Take-up Housing

#### Locking Styles

Set Screw, Eccentric Collar and Adapter Locking

#### Bore Diameter Size Range

½" To 2" And 20 mm To 50mm

#### Special features

- AISI 304 Stainless Steel Housing
- AISI 440C Stainless Steel Rings and Balls
- AISI 304 Stainless Steel Flingers and Retainers
- Mobil FM222 food grade grease
- Smooth Surface for Easy Cleaning
- Set screw Lock – Wide Inner Ring
- AISI 304 Stainless Steel Setscrews
- Anti Rotation Pin
- Stainless Steel Grease Fittings

\*Every care has been taken to ensure the correctness of the information contained in this publication but no liability can be assumed for any incorrect or incomplete data. KML technical department reserve the right to final interpretation.



**KML Motion Industries CO., Ltd.**

Address: Rooms 2605-7, Saxon Tower, Cheung Shun  
Street, Lai Chi Kok, Kowloon, Hong Kong  
Tel: 852-2425-1661  
Fax: 852-2480-5866

**KML Motion Industries (ShangHai) Holding CO., Ltd.**

Address: Room H, Floor 20, XinDongya Hotel, 238  
Nandan Road East, Shanghai, China  
Tel: 86-21-6468-6262  
Fax: 86-21-6427-6197

**KML Bearing (Xinchang) Company Ltd.**

Address: No. 5 Xia'an Road, Yulin subdistrict, Xinchang  
County, Zhejiang, China  
Tel: 86-575-8609-0285

**KML France 4S**

Address: Za Le Fromy 35240 RETIERS  
Port: +33 679 514 215  
Fixe: +33 299 470 627

**KML USA.**

Address: 213 Jones Blvd., P.O. Box 1136,  
Pottstown, PA 19464, USA  
Tel: 610-495-6134, 877-495-6134 (toll free)  
Fax: 610-495-6183

**KML Europe 4S BVBA**

Address: Noordlaan 21, 9200 Dendermonde,  
Belgium  
Tel: 0032(0)52/33.98.00

**E-mail: [info@kml-bearing.com](mailto:info@kml-bearing.com)    [Http://www.kml-bearing.com](http://www.kml-bearing.com)**